



Kipon Leica S to Fuji GFX Adapter

Introduction

In 2009, Leica released a completely new camera series, called the Leica S system. It was the first completely new developed digital camera system from Leica, with a new bayonet (the Leica S bayonet). The key features were a relatively compact size compared to the medium format offers of this time, lenses that were optimized for digital sensors (Leica claimed the lenses capable to resolve much more than 100 mpx, while the first S cameras had «only» 37 mpix) and had extended weather sealing and a waterrepellant front element, which was a novelty for medium format at this time as well. Also, Leica announced that some lenses could come with a central shutter as an option.

While this was a really bold move, the system was still old school. CMOS sensors were not yet available for this size, so the whole system was build around a relatively proven concept: A camera with a (huge) mirror and a simple, one single point autofocus system.

But Leica kept their promise and released after a «starter-kit» with the 35, 70 and 120mm lenses a full lens setup, starting from 24, 30, 35, 45, 70, 100, 2x120 up to 180 mm and one zoom, the 30-90 mm. All those lenses were relatively slow, from 2,5 to 3,5 maximum aperture, with the exception of the later 100/2.0. The CS lenses were available some years later. The cameras could switch from normal shutter to center shutter, if this option was available on the lens. As I used some Hasselblad HC lenses on the Leica S as well, I can tell that the Leica S lenses were optically significantly superior to the HC lenses.

Over the years, Leica updated their cameras, from the S2 to the S007 and later the S3, but no new lenses were introduced. The system was extremely expensive, the earlier cameras were 18 to 23 k us\$ and the lenses well above 6 to 8k. While the S3 was priced a bit more reasonable at around 14k, the prices for lenses went up to around 8k new.

But as the customer base was relatively small, and the upcoming concurrence with Fuji and Hasselblad, Leica decided to drop the S-line at the end of 2024. As a consequence, the prices for used Leica S lenses fell dramatically. Today, in 2025, you can find used

lenses in the price range from 1,5 to 2,5 k for the most popular lenses as the 35 and the 70. To be honest, first adapters to the Leica system as me are very upset of this evolution. If you have so many S lenses as I had, you can easily do the math how much money I lost with this system.

Leica brought with the appearance of the SL a dedicated and of course expensive S to L adapter, but honestly, there is little interest to use those lenses on a 35mm camera, as they are too heavy and too slow. There were long time rumors that Leica might produce a medium format camera like the Fuji GFX or Hasselblad, so that S lenses could be used via an adapter, but nothing happened and it would be expensive anyway.

Kipon enters the chat



End of 2024 KIPON announced that they will manufacture a Leica S to Fuji GFX adapter.

This were excellent news for us S-owners, as this made modern camera technology available for us. I immediately ordered a Fuji GFX 100II and what seems to be their best lens, the 55/1.7.

This said, the adapter was not shipped before April 2025, so I had enough time to familiarize with this camera. I found the GFX100II to be a truly excellent camera, with outstanding image quality, fast AF and all the bells and whistles of a modern camera. It became rapidly my only choice for portrait

shootings, but of course my main goal was to use my S lenses on the GFX.

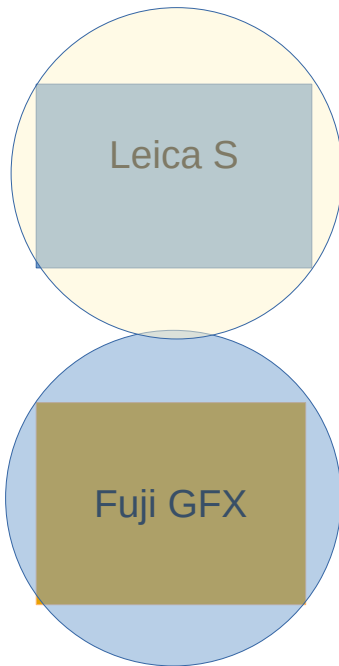
Some technical considerations

The Leica S uses a 3/2 sensor, probably because they wanted to stick to this format, as they invented it, or because otherwise they would have to handle a larger mirror, which would have made the camera even bigger.

On the other hand, the GFX uses a 4/3 sensor. Intuitively, I thought that the Leica sensor is bigger than the Fuji sensor, but I did my homework and found the contrary to be true.

When you look at the graphics below (sorry for the badly centered sensors) you see that not only the Fuji has a slightly larger surface (1441 mm² over 1350 mm²), but surprisingly also a slightly bigger image circle (54.8 mm over 54.1mm) .

Sensor size comparison Leica S <> Fuji GFX



Leica S 45x30mm²
> surface = 1350mm²
Image circle 54.1mm

Fuji GFX 43.8 x 32.9
> surface = 1441mm²
Image circle 54.8mm

In theory, this could result in vignetting, as the Leica lenses are made for a slightly smaller sensor. But to make it short, in practice I have never seen such thing as vignetting with this combo.

The Kipon adapter

The Kipon adapter is made from solid black anodized aluminium, with bajonets made from aluminium with a hard anodized coating . It has electronic connectors on the camera side and on the lens side. Unfortunately, the adapter is not weather sealed, which is a bit disappointing because the S lenses and The Fuji GFX are weather sealed, and you create a weak point here. On the other hand the bajonet sits tight on both sides so it needs probably heavy rainfall that water can enter there.

Overall the adapter is very well made, for example I appreciate that the inscriptions are nicely engraved and painted.



In the picture above you see the connectors on both sides, camera side and lens side

The adapter has an USB-C port which is covered by a flimsy rubber part. I would highly recommend to seal the usb-port with a tape to avoid to loose the rubber part and to add a bit of security.

The adapter has a diameter of 80 mm and will add 26 mm to the length of your lens. It weighs 178 gr. It has a tripod support, but honestly, I wouldn't attach anything on this support as it looks very tiny. But that's just me.

The elephant in the room is autofocus. Will it work? Kipon claims full af-compatibility for "some lenses". From my personal experience, and from the experience of some other users, after updating to firmware 2.3, I can report that the following lenses work with this adapter: 35, 45, 70, 100, 120, 120 CS and 180. Others report that the 30-90, which I don't have anymore, work as well. There are still some minor issues, like some problems with the exifs, but actually, in July 2025, I can say that those adapters work fine.

Some lenses might not work, because they have not the latest firmware. It can be a mess to get the latest firmware, as you need a S3 or at least a S007 with the latest firmware installed to update the lenses.

Generally speaking, the adapter delivers the full compatibility of the S lenses with the GFX. This means all exposure modes, and all autofocus modes like eye-af as well. This said, af is a delicate topic. Yes, Kipon managed to get a decent working af with these lenses. BUT those lenses are sloooooow by default. Their stepping motors have a noticeable weight of glass to move, they do the best they can, but sometimes, especially in bad light, the result is a tad off. This has also been the case with the S-bodies. Forget af-c. Stop down a bit to get a bit more latitude, and you are fine and you will have stunning results. If you shoot wide open, make some shots more than you would do with another camera. Just to be sure. This is not a problem of the adapter, it is a problem of the lenses. Their outstanding sharpness and clarity reveal even the slightest mis-focus, especially on a 100 mp sensor. BTW, this is one of the reasons I gave up on the S-system.

You also can focus manually with high confidence, the Fuji has some neat assistance for that.

The Kipon adapter reads out some information of the lens, like focal length and aperture, to transmit them to the camera and to write exifs to the files. The nomination of the lenses is not the same as what we get from a Leica body, probably due to copyright issues. This said, it is possible to apply the original lens correction in Lightroom.

On a side note, a word about weight: For example, my 45/2.8 Elmarit attached to the GFX100 via the adapter weighs 2,3 kg, and the size is about the same of a Nikon Z9 with a 200/2 attached.

Let me add a comment about the price: The adapter is priced at around 1 k, a bit more or less depending where you live, adding shipping costs and taxes. Considering that a Leica adapter would cost more than the double, and that it is a high quality niche product, I find the price reasonable.

Testing and practical experiences

I made several shootings with a model, to test the af-capabilities of the the GFX-S combo, as well as photos of static objects

A) Autofocus

One of the main selling points of this adapter is to enable the advanced AF capabilities of the Fuji GFX for the S-lenses. From my testing with my GFX100II, I can report that af works fine, even advanced af-modes like face-recognition work well. But you have to keep in mind the limitations of the S-lenses: The af is slow, sometimes it doesn't catch up an object, or is unable to stick on moving objects like heads, let alone running objects. This said, imho the af speed is much better than on Leica S cameras, and more precise as well. But the only Fujinon lens I have, the 55/1.7, is faster and more reliable. It is as it is.

B) Manual focus

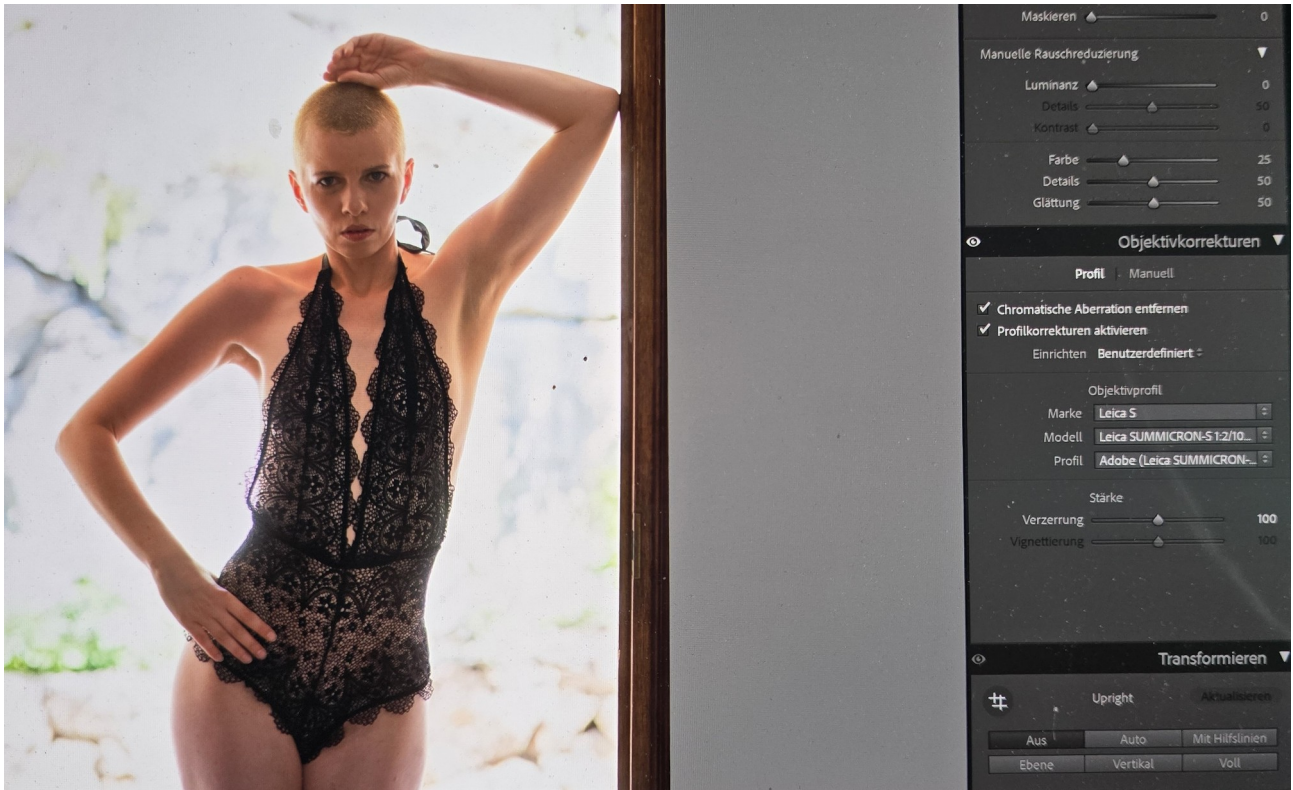
While I didn't even bother with continuous af, I did made some tests with manual focus. To be honest, I'm not a manual guy except for the Leica M system, where it is a feature. For modern cameras there are only rare cases when you have to rely on manual focus. But I was a bit frustrated with the S 180, which is a bit a pain because of its minimal focus distance of 1,5 m. So I tested manual focus with all my S-lenses. Surprise! With the focus aids, the stabilization of the GFX and the smooth focus clutch of the S-lenses, manual focus was a breeze and a real joy to use! I nailed focus very often. This was the biggest surprise for me, the first time I really enjoyed manual focus with consistant and excelent results!

C) Practical aspects

During this testing time, I made a lot of photos, at home, outdoor, and a bit of studio work. Changing the lenses frequently, the adapter worked flawlessly, the lenses were easy to mount and dismount (much easier than the Fujinon lenses where you often grab the aperture ring by mistake!), everything felt solid and after some time I felt really confident with this setup. Honestly, the Fuji GFX 100 is far behind the Leica S when it comes to ergonomics, the Leica is a masterpiece in this regard. But on the other hand, you cannot neglect the technological advancements of the Fuji: EVF, stabilisation, focus modes, different wiewfinders, flashes USB charging, etc

D) Image quality

Not much to report here. The image quality of this combo is outstanding, really! There is absolutely no vignetting, and interestingly, you can find and use the original Leica-lens-profiles in LR, which impressed me a lot.



Conclusion

For photographers like me, who own a bunch of Leica S-lenses that lost their value due to Leicas policy, this Kipon adapter is a gift from heaven. Finally, most of the lenses will be usable again with a modern, high resolution camera, and benefit from all of the improvements the industry offered us during the last decades. The Fuji GFX100II is a formidable camera, and the quality of the Leica S-lenses is a perfect match.

The Leica S lenses deliver, even for today's standards, exceptional image quality. I think most photographers who uses them agree that these are among the finest lenses ever produced, with a nice 3D-pop and an unmatched transparency, especially stopped down. Their weak points are the slow autofocus, their weight and size, and some are still a bit pricy, considering that they are used lenses.

But what if you don't have Leica S-lenses and you want to add some lenses to your Fuji GFX portfolio? It depends really on the price and if you want to accept the downsides I described above. The Fujinon GFX primes are not bad at all, they are faster, and more compact. They also have an aperture ring, which the Leica S lenses don't have, and the limited possibilities to assign functions to the wheels of the GFX might ruin the experience

Also, you should consider to learn about the Leica S-Lenses before any purchase, as some are not supported anymore by Leica (lenses > 100mm), some are a bit strange like

the 120 TS or the 180 with the elpro. The Leica lenses are really excelent, but the af-performance is still sub-par to todays standard, which should be taken into consideration.

But if you search for something special, then this is certainly a niche to explore.

Some personal notes and additions

I bought the Kipon adapter myself from my own money, but Kipon sent me a second one with updated firmware for free in exchange for this review. Which is a fair deal imho considering the effort that has gone in the review, the testing and the hassle I had with the firmware-updates.

My Bio:

I'm a fashion, nudeart and landscape photographer for 30+ years. I started with Nikon, and switched to Leica for the S-system, which I used for around 10 years before opting for the SL-system.

Since many years, I run a Leica S group on FB, feel free to contact me to get added.

I'm also on the french forum Summilux and on LFI, but I'm much less on those forums today than in the past. You might want to check my instagram accounts

#leicacentric

#stevesblackandwhite

#stevescolorphotography

my website: www.steves-photo-art.com